



European Studies + German Class

Vienna – Prague - Munich

The EU's Quest for Competitiveness: Technology, Geoeconomics and International Power Dynamics

SYLLABUS

July 20 – August 28, 2026
www.european-study.eu



Tentative Syllabus



Foreword

We are pleased to welcome international students from many different countries and universities to the Munich International Summer University (MISU) in Germany.

The European Studies Program takes place under the patronage of the Chair of Political Systems and European Integration at Ludwig- Maximilians-Universität München in cooperation with the Department of International Relations of Central European University (CEU) Vienna.

The European Union is the most prominent example of regional cooperation. Both historical lessons and today's global challenges spur European states to prefer cooperation over unilateral policy-making. Starting out as a peace project resting primarily on economic cooperation, the EU has developed into a supranational polity that does not fit neatly into the categories of a 'state' or an 'international organisation'. European integration resulted in ever expanding EU authority, the 'Europeanization' of national political and economic systems as well as increased foreign security policy cooperation.

At the same time, however, disagreement on how to deal with crises in Europe's eastern and southern neighbourhood, on the handling of refugee flows from the Middle East as well as the still looming sovereign debt crisis seem to show the limits of European consensus and solidarity. Time and again, national particularities appear at odds with the common interests. Domestically, public opinion has become less favourable with regard to European cooperation than it had been in the past, with the United Kingdom having decided to exit the Union. Internationally, the EU is triggered to re-consider its global role given the past US administration's isolationist tendencies and the current security challenges such as the war in Ukraine.

Decades of European governance and most recent crises phenomena increased levels of politicization and societal mobilization in Europe. Citizens increasingly form political attitudes and enter into societal conflict along identity lines. Beyond the previous cleavage between left-wing socialist and right-wing neoliberal economic views, today cosmopolitan, green and alternative perspectives clash with traditional, authoritarian and nationalist groups thereby challenging the national and European political systems and decision-makers to organize compromise in society.

The Munich International Summer University is based on an interdisciplinary approach. It combines different methodologies such as lectures, round-table discussions, group-work and students' presentations along with excursions. In addition to the academy, we encourage you to engage in a vibrant international student life on the campus of LMU Munich during the summer of 2026.

Academic Host

Prof. Dr. Klaus Goetz,

LMU Munich, Chair of Political Systems and European Integration

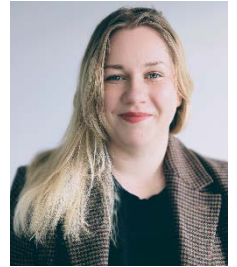
One core interest of the Chair is the process of Europeanization of the political system of Germany and the role of Germany within Europe. Another focus relates to integration and migration in the European states as well as the relationship of politics, state and religion in Europe. Finally, neo-institutional perspectives on parliaments are part of the research.



Cooperation Partner and Lecturer in Vienna

Senior Lecturer: Sophia C.E. Mård

Sophia C.E. Mård is a PhD candidate at the Doctoral School of Political Science at Central European University. With advanced degrees from VU Amsterdam and King's College London, she brings a rich interdisciplinary background - of law and of politics - and regional expertise spanning European and Russian studies. Her research explores the shifting landscape of European and international security, with a particular focus on how emerging technologies are reshaping legal and political norms. She is currently involved in multiple research and consultancy projects focused on democracy, human rights, and political development in Europe.



Cooperation Partner and Lecturer in Prague

Professor Dan Marek

(Jean Monnet Lecturer in European Politics; Palacký University)

Dan Marek is Associate Professor of European Politics at the Department of Politics and European Studies, Palacký University, Czech Republic. He has studied at Palacký University (Czech Republic), University of Umea (Sweden), UCLA (USA) and Hull University (UK). He taught Central European and EU politics at universities in the Netherlands, the UK and USA.

His teaching and research interests include European Union politics, policies and Central European politics. He is a co-author of *Cohesion Policy in the European Union* (Palgrave Macmillan, 2014) and *The Czech Republic and the European Union* (Routledge, 2011) and co-editor of *EU Cohesion Policy after Enlargement* (Palgrave Macmillan, 2008) and *The New Member States and the European Union: Foreign Policy and Europeanization* (Routledge, 2013).

His other publications include articles on European and Czech politics in the *Journal of Common Market Studies*, *Publius*, the *Journal of International Relations and Development*, *Perspectives on European Politics and Society* and the *Journal of Contemporary European Studies*. He also worked as an advisor to the Czech government on the preparations for the Czech EU Presidency (2007-09).



Course Schedule

EU Studies + German Class

Please see the schedule in detail on our website

www.european-study.eu

and

www.ssk-misu.de

European Studies Vienna – Munich - Prague

Application deadline: May 1 (March 1 early bird)

Arrival:	July 19, 2026 (in Vienna)
Date:	
Vienna:	July 20 – 30, 2026
Prague:	July 31– August 3, 2026
Munich:	August 4 - 28, 2026
Departure:	August 29, 2026 (from Munich)

Course Requirements

General course requirements

The Academic Board of the MISU defines the requirements and contact hours (1 contact hour comprises 45 minutes) for successful completion of the courses as follows:

- regular attendance (six contact hours max. absence)
- preparation for and active participation in seminars
- attendance and contribution to lectures
- participation in and contribution to class excursions
- self-study and homework assignments
- written assignments (exams, essay)

Literature

All participants receive introduction literature by email in advance. During the course, students will get online access to research papers and articles. Lecturers will upload relevant research papers and distribute a link to course participants for downloading relevant teaching material. Please make sure that you bring an electronic device in order to be able to download these resources. For a general introduction to the European Union we recommend the following volumes that comprise short chapters on the history, the Member States, institutions and policies of the European Union.

Jones, E., Menon, A. and Weatherhill, S. (eds.) (2012): *The Oxford Handbook of the European Union*, Oxford: Oxford University Press.

Lelieveldt, H. and Princen, S. (eds.) (2015): *The Politics of the European Union*, 2nd edition, Cambridge: Cambridge University Press.

Wallace, H., Pollack, M. and Young, A. (eds.) (2015): *Policy-making in the European Union*, 7th edition, Oxford: Oxford University Press.

Student Profile

Target group

The LMU Munich's European Studies Program is open for students...

...who have an interest in the *European Union* as well as European history and culture

...who have different academic backgrounds and cultural interests

...who are looking for an *interdisciplinary learning environment*

...who are in their B.A. and M.A. and would like to engage in *peer-learning*

...who are willing to *meet politicians*, diplomats and staff of the European Union

...who are awarded with *9 ECTS credits* for their performance

Achievements

Former participants have evaluated this program very positively and stressed the following benefits:

- profound introduction to the European Union through academic excellence
- seeing Europe from three different perspectives given the stay at three different cities
- immersion into the European and the German culture in particular
- intercultural and interdisciplinary exchange with fellow course participants
- consideration to return to Europe for a Master program

Credits

Based on the number of contact hours, both course options can be considered “intensive” in comparison to courses taken at your college/university. Thus, it may be appropriate to award credits on a two- to-one course calculation. To be awarded credits from home colleges/universities for this course, MISU recommends successful students to petition their faculty for the following:

European Studies without Munich part; include German class)

- Contact Hours: 50 (include field trips and extracurricular activities)
- Credits: 6
- German Class 6

European Credit Transfer system (ECTS) and ECTS Credits

The ECTS was developed in order to provide common procedures that may guarantee academic recognition for studies abroad. ECTS credits are based on the workload students need in order to achieve expected learning outcomes. The ECTS (European Credit Transfer and Accumulation System) is a standard for comparing the academic level and performance of students in Higher Education across the European Union.

Students will be awarded 1 ECTS credit for 30 hours of work, including attending classes, self-study, examinations and essays.

The Academic Board of the MISU defines contact hours as follows:
1 contact hour comprises 45 minutes

Grading

Grading Scale

Grades are defined from the Academic Board of the LMU in Munich according to its general grading system. The LMU differentiates 6 levels (from 1 to 6), which cover everything from introductory course work to original research. This course is offered for students having successfully completed levels 2 and 3.

Level	Description
1	Introductory course with intensive supervision; no course prerequisites; generally first year courses
2	Introductory course, independent study techniques included; no specific course prerequisites; generally second year courses
3	For advanced students, course prerequisites: successful completion of level 1 or 2; examinations test the students' ability to apply knowledge and insights to new problems; generally third year courses
4	Specialized course, course prerequisites: successful completion of level 2 or 3; extensive use of scientific articles; examination may include a small research project, an oral report or written work. This is a third year Bachelor's or first year Master's level course
5	Scientifically oriented course; course prerequisites: successful completion of level 3 or 4; use of scientific advanced literature. This is a Master's level course
6	Very advanced scientific course; latest scientific developments included; examinations consist of a contribution to an unsolved problem with an oral presentation; Master's or PhD level course

LMU Grade	Description	Grade ECTS	US	US	Percentage
1.0	excellent	A	A+	4,0	100 – 97
1.0	very good	A	A	3,9	96 – 93
1,3	very good	A	A-	3,7	92 – 90
1.7	good	B	B+	3,5	89 – 87
2.0		B	B	3,3	86 – 83
2.3		B	B-	3,0	82 – 80
2.7	satisfactory	C	C+	2,7	79 – 77
3.0		C	C	2,3	76 – 73
3.3		D	C-	2,0	72 – 70
3.7	sufficient	E	D+	1,3	69 – 67
4.0		E	D	1,0	66 – 60
> 4.0	insufficient	F	E	0,0	59 – 0
NG	not graded	F		0,0	0

EU Studies

Grading Procedure

On successful completion of the course students will receive a graded certificate and 6 ECTS credits .

20 % = active participation in class

20% = Continuous Evaluation – Weekly Reflections

20 % = written exam (Vienna)

40 % = Final reaction paper (2000 words; deadline 30 September)

German Class

Grading Procedure

On successful completion of the course students will receive a graded certificate and 6 ECTS credits. Therefore, you have to meet the following course requirements :

- regular attendance (maximum absence: 12 lessons in total)
- homework
- active participation in class
- presentation of a study relevant topic (“Referat”)
- admission to and taking the written exam at the end of the course

Those who do not pass the exam and/or are absent for 13 lessons or more may still obtain a certificate of completion but without ECTS points and without grade.

Transcripts

Every student will receive an official transcript of the LMU MISU after the successful completion of all program requirements. The transcript will show the course name and contact hours, the number of acquired credits as well as the achieved grades.

Costs

Registration Fee

- € 400,00 Regular registration fee (€ 200 early bird by March 1)

Please send us the registration fee of € 400 after you receive your registration confirmation by email. Only with the payment of registration fee will you secure a place in the program and accommodation.

Tuition fee

Tuition includes the following:

- all lectures
- course reading material
- class excursions and extra-curricular activities (City tour, Neuschwanstein Castle, Concentration Camp Dachau Memorial Site)
- transport by train from Vienna to Prague and from Prague to Munich

Costs for housing, books and supplies, meals, public transport tickets are not included in the tuition or registration fee.

European Studies Intensive + German class

€ 1,657 Tuition

- 45 contact/class hours, 6 ECTS credits European Studies Course
- 90 contact/class hours, 6 ECTS credits German class

Housing

We offer accommodation for the participants in student residential halls or hotels. Own booking of accommodation is possible.

- € 440 Vienna
- € 150 Prague
- € 600 Munich

Cancellation Policy

Cancellation*:

- Cancellation before the registration deadline:
- The registration fee will not be refunded.
All other deposits will be fully refunded.
- Cancellation after the registration deadline:
- The registration fee will not be refunded.
If accommodation was booked, the rent will not be refunded or have to be paid.
- Cancellation 6 weeks before commencement of the course:
- The registration fee will not be refunded.
If accommodation was booked, the deposit for the rent will not be refunded and 50% of the tuition will not be refunded.
- Cancellation 3 days before commencement of the course:
- The registration fee will not be refunded.
If accommodation was booked, the deposit for the rent will not be refunded and 80% of the tuition will not be refunded.
- Once the course has started, no refund will be granted.
- **Cancellation by MISU**
- All tuition and fees will be refunded.
- * All bank charges are excluded from repayment.

Housing

Vienna (tentative)

In Vienna you'll stay in double rooms at SMARTments business Wien Hauptbahnhof. All rooms are equipped with shower, toilet, powerful Internet (WLAN und LAN), room telephone, refrigerator and kitchenette. You will be provided with bedding. This includes sheets for the mattress, blanket and pillow.

Location: close to the center, central station and Belvedere. Public transport: U1 subway, bus 13A and 69A, tram 18 and O

Prague (tentative)

For the trip to Prague, participants of the European Studies program are accommodated at the Hotel Ostaš. The hotel is located approx. 25 minutes from the historical center of the capital.

The hotel is located within a safe and quiet neighborhood.

Our participants will stay in shared apartments (double rooms) and breakfast is included. All rooms are equipped with shower, toilet, WLAN, microwave, refrigerator and water heater.

Munich

Each student will be accommodated in their own room. Some of these rooms are single apartments, with their own kitchen and bathroom. Other rooms are in shared apartments with shared kitchen and shared bathrooms. The students are responsible for the cleanliness of the shared spaces by themselves. There will be no cleaning by the owner (Studentenwerk München).

The rooms are equipped with bedding (sheets and blankets) which can be washed at one of the laundry rooms in the building.

Kitchen utensils and towels will not be provided. We ask you to acquire these items according to your own personal needs.

During their stay, each student is responsible to clean their room by themselves.

Internet access is available via Ethernet (LAN) cable. The cable is not provided. Please bring your own.

Important Note:

The rooms are state-subsidized living spaces that are used by the Studentenwerk München (owner and administrator of the rooms) for all students alike. Due to the high demand for living space in Munich, we are pleased that the rooms from the contingent of universities are made available for MISU.

Please note that the rooms are tailored to students' needs and financial means. Therefore, please do not expect luxurious facilities.

Registration

In the interest of maintaining the program's high standards, the number of participants will be limited to 20. Application is based on a 'first come first served' basis. Only with the payments are you securing your place in the program.

The online registration process starts on 1st of November 2025

Application deadline: May 1 (early bird March 1)

Final tuition- and housing
fee deadline: May 10th

Furthermore, we kindly ask you to prepare following information as PDF files for upload in advance:

Curriculum vitae (CV); you may use the Euro Pass format
<http://europass.cedefop.europa.eu> if you do not have your own form.

Statement of motivation; Applicants should write a short statement of no more than one typed page in English as to why they wish to take part in the summer program.

Please follow this link to register:

www.european-study.eu

Contact

Head of the Program

Kai Wede

Director

Munich International Summer University (MISU)

Ludwig-Maximilians-Universität München

c/o International Office

Geschwister-Scholl-Platz 1

80539 München

Email: kai.wede@lmu.de

Administration / Application Contact

Ms Jasmin Puschner

Senior Program Coordinator

Munich International Summer University (MISU)

Email: office@european-study.eu

Further information: www.european-study.eu